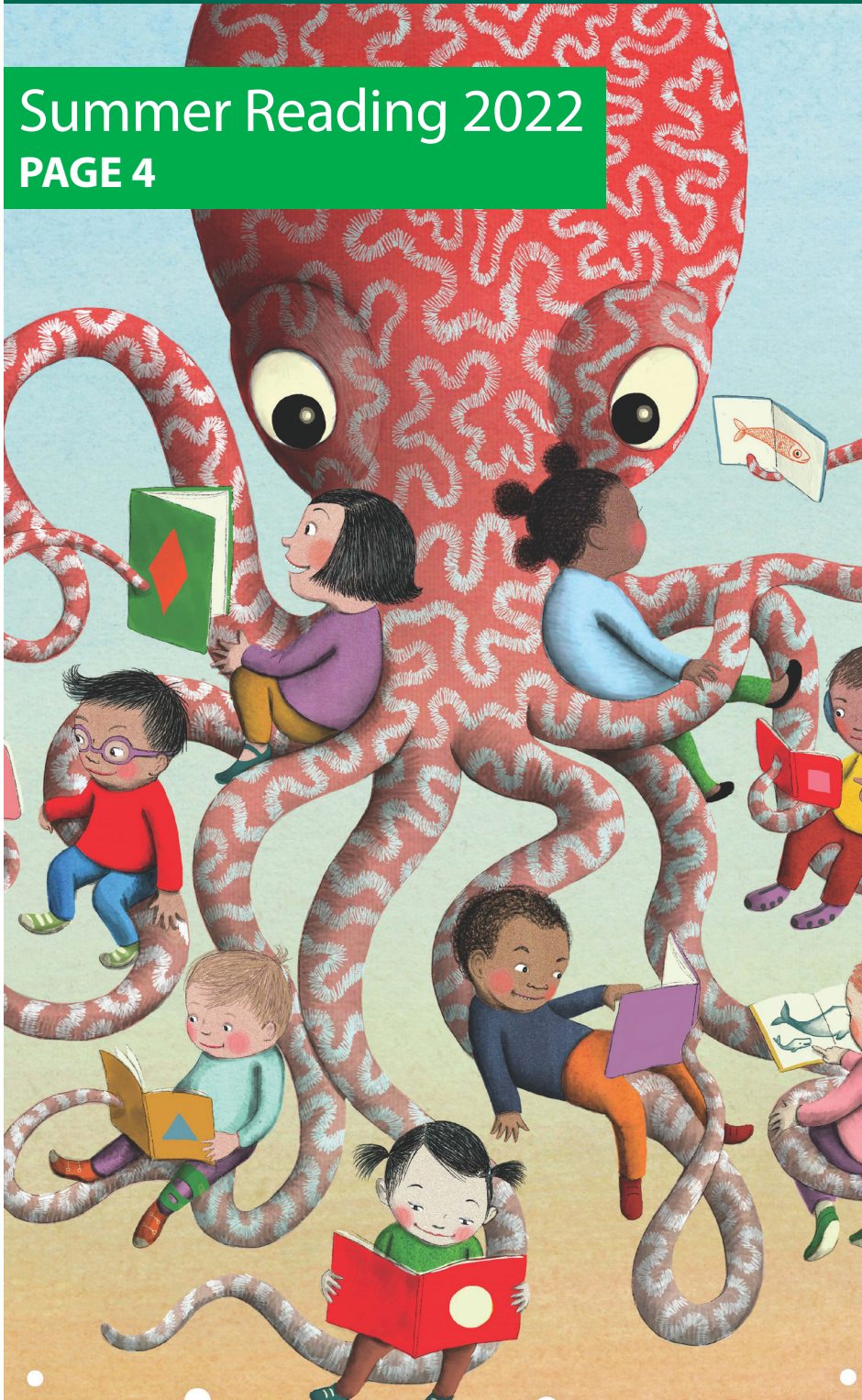


## Summer Reading 2022 PAGE 4



451 Delaware Ave., Delmar • 518-439-9314

[www.bethlehempubliclibrary.org](http://www.bethlehempubliclibrary.org)

## INSIDE:



2022-23 budget information  
Pages 2-3



Backyard composting  
Page 6



In-person storytimes  
Page 7



A plan for the future  
Page 8



# 2022-23 Budget

	2021-22	2022-23	Comments
<b>Library materials</b>			
Books/audiobooks/ebooks	\$444,000	\$480,000	————— Maintains core collection and reflects increase in e-content usage
Online services	28,000	27,000	
Periodicals	18,000	19,000	
Movies and music	53,000	45,000	————— Decreased demand due to streaming
Special collections	18,000	15,000	————— Decreased demand for the Library of Things
Total materials	\$561,000	\$586,000	
<b>Salaries and benefits</b>	\$3,184,903	\$3,266,500	————— Negotiated salary increases and estimated health-care costs
<b>Operations</b>			
Utilities	\$71,000	\$82,000	————— Increased costs for electricity and gas
Photocopiers	18,000	15,000	
Office and custodial supplies	46,000	47,400	
Equipment and furniture	40,000	40,000	
Postage	20,000	20,000	
Insurance	29,000	29,000	
Taxes (water and sewer)	3,400	3,400	
Conference and travel	3,000	3,000	
Memberships	3,000	3,000	
Special programs	35,000	32,000	————— Reduced in-person programming for the public
Building and equip. maint.	84,000	87,000	————— Increased operational costs
Van operation	4,000	4,000	
Financial services and auditing	39,000	54,000	————— Includes upgrade to financial services system
Printing and marketing	38,000	35,000	
Professional services	30,000	30,000	————— Attorney's fees for contract negotiations
Miscellaneous	4,000	6,000	————— Incidentals
Online catalog/circ. system	52,000	53,000	————— Planned increase in library system fees
IT/hardware and software	42,000	42,000	
Refund of real property taxes	10,000	7,500	————— Expected fewer tax refunds
Capital improvements/contingency	135,000	135,000	————— For building updates and other needs
Total operations	\$706,400	\$728,300	
<b>TOTAL EXPENSES</b>	<b>\$4,452,303</b>	<b>\$4,580,800</b>	
<b>Income</b>			
PILOT	219,570	227,724	
State aid	23,170	24,500	
Photocopiers	7,500	6,500	
Interest	7,500	6,000	
Lost book payments	0	2,500	————— Charges for lost or damaged library items
Fines and fees	15,000	2,000	————— Elimination of fines; overdue fees still apply for museum passes and Library of Things
Gifts and donations	2,000	3,500	
Book sale	5,000	0	————— Book sale now managed by the Friends
<b>TOTAL INCOME</b>	<b>\$279,740</b>	<b>\$272,724</b>	
<b>BUDGET</b>	<b>\$4,452,303</b>	<b>\$4,580,800</b>	————— 2.89% increase
Minus income	279,740	272,724	
<b>Equals LEVY</b>	<b>\$4,172,563</b>	<b>\$4,308,076</b>	————— 3.25% increase — <b>under the state tax cap</b>
<b>Fund balance</b>			
		\$1,400,000	————— Funds operations from July until taxes received in October
		2,310,100	————— Designated for capital expenditure and building needs in conjunction with the library's Long Range Plan
<b>TOTAL FUND BALANCE</b>		<b>\$3,710,100</b>	

For additional financial information, please see the audited financial statements of Bethlehem Public Library online at [www.bethlehempubliclibrary.org/about-us/board-of-trustees](http://www.bethlehempubliclibrary.org/about-us/board-of-trustees).



518-439-9314 • [www.bethlehempubliclibrary.org](http://www.bethlehempubliclibrary.org)

### Equity, education and connection

THE 2022-23 BUDGET comes on the heels of the library's Long Range Plan outlined in a pair of documents finalized earlier this year after months of thoughtful discussion and public input. The budget supports a number of goals in the plan, as well as the key components that drive our service: equity, education and connection.

WE BELIEVE THIS BUDGET represents a wise and judicious allocation of our financial resources as we dedicate an increased percentage of our budget to expand both our physical and electronic collections to reduce wait times for popular titles. In the coming year, we are planning a one-time upgrade to our financial services system, which will allow us to stay efficient when it comes to managing the library's business needs. The proposed budget will also allow us to accommodate expected significant increases in energy costs next year.

AS A SERVICE-DRIVEN ORGANIZATION, we've taken a close look at our staffing needs, and the 2022-23 budget provides for the addition of two new staff positions, with one dedicated to coordinating and supporting volunteer and accessible employment opportunities at the library.

WE REMAIN MINDFUL of our role in removing barriers to library access within our community and have made the necessary budget adjustments to move to a fine-free model later this year.

THE BUDGET ALSO ADDRESSES some of the building needs outlined in the Long Range Plan, as well as some of the noticeable wear and tear of spaces that have not been updated since 2004. The 2022-23 budget will let us stay on top of these everyday needs as we continue to discuss our vision for the future of the library building based on the public feedback we've received through forums and surveys.

LAST YEAR, recognizing the difficulties brought on by the pandemic, we put forth a budget with a 0% levy increase. During that time, we've been able to expand services such as curbside pickup while increasing our circulation to near pre-pandemic levels – without any layoffs. On the ballot this year is a levy 3.25% higher than last year, within the limit specified by New York State, and an amount that will allow us to deliver the best library services at the greatest value to you.

— Bethlehem Public Library Board of Trustees

#### Meet the Candidates

Wednesday May 4 • 6pm

The candidates seeking a 5-year term on the library's Board of Trustees will introduce themselves and talk about why they are running.

#### Budget review

Monday May 9 • 6pm

An introduction of the 2022-23 library budget will take place prior to the regular board meeting.

#### Budget/trustee vote

Tuesday May 17 • 7am-9pm

Vote takes place at Bethlehem Central High School.

## footnotes

May/June 2022

Kristen Roberts, editor/staff writer

### Trustees

Mark Kissinger, *president*

Michelle Walsh, *vice president*

Caroline Brancatella, *secretary*

Lisa Scoons, *trustee, UHLS board*

Harmeet Narang, *trustee*

Mary Redmond, *trustee*

Charmaine Wijeyesinghe, *trustee*

Sharon Whiting, *board treasurer*

### Director

Geoffrey Kirkpatrick

### Library board

• Monday May 9 • 6pm

• Monday June 13 • 6pm

### Friends board

• Monday June 20 • 6:30pm

### Library hours

weekdays 9-9 • Saturdays 10-5

Sundays 12-5

### Holiday hours

• May 28-30 CLOSED: *Memorial Day Weekend*

• June 19 CLOSED: *Juneteenth*

• July 4 CLOSED *Independence Day*

### Contact us

• 518-439-9314

• information@  
bethlehempubliclibrary.org

• trustees@  
bethlehempubliclibrary.org

### Visit our website

[bethlehempubliclibrary.org](http://bethlehempubliclibrary.org)

The *footnotes* newsletter is published six times a year and mailed to all households in the Bethlehem Central School District.



# Summer Reading 2022

## Read your way through summer

Are you ready for the 2022 Summer Reading Challenge? This year's theme, **Oceans of Possibilities**, explores animals and the stories inspired by the sea. Sign-up for adults, teens and children begins online **June 20** at [www.bethlehempubliclibrary.org](http://www.bethlehempubliclibrary.org).

Once you sign up, you can start checking off your reading milestones right away!

### Summer Reading Kickoff: *The Pirate of Book Island* by The Puppet People

Friday June 24 • 3pm **OR** 6:30pm

*Solve the mystery of Book Island and help the hero save the day in a performance for kids and families that promises plenty of public participation.*

*Join us on the Green for this Summer Reading Kickoff event.*

*Please bring a low lawn chair or blanket to sit on to enjoy the show.*



## All ages

## Friends Book Sale Fundraiser

Make space on your bookshelves and stock up on some new-to-you books and DVDs this spring at the Friends of Bethlehem Public Library's Pop-Up Book Sale on the library plaza **Saturday and Sunday May 21-22 from noon-4pm**. For sale will be books and other materials that have been removed from the library collection and are in excellent condition. Many are duplicate copies of popular titles, and large print titles will be available.

**Pricing is cash-only by suggested donation; the Friends will not be able to make change.**

Enjoy some live music while you shop with the following performers scheduled for **Saturday May 21**:

- **Noon-1pm**: Guitarist Warren Sieme will play familiar tunes for families.
- **2-3pm**: Jazz trumpeter Steve Lambert and guitarist Joe Finn will perform.

### Friendship and Art on the Trail: Shared Experiences at Partridge Run

Saturday May 7 • 1pm

*Join local author-artists Carole Fults and Diane Kavanaugh-Black for stories and images about friendship, internal and external journeys, critters and plants, bear poo and challenging climbs — with local nature areas as the backdrop. Will take place on the Green, weather permitting.*

### Bethlehem Senior Chorus Concert

Tuesday June 14 • 11am

*Enjoy a musical morning on the Green with this talented local chorus. Bring a lawn chair or blanket to sit on to enjoy the show. Rain date is June 17.*

### Craft Social Night

Wednesday June 29 • 6pm

*Whether you knit, crochet, quilt or sew, bring your current project and join us for an evening of outdoor crafting and socializing.*

## The Pirate of Book Island June 24

## Book Sale Fundraiser May 21-22



 sign up: [bethlehem.librarycalendar.com](http://bethlehem.librarycalendar.com) |  program is virtual

518-439-9314 • [www.bethlehempubliclibrary.org](http://www.bethlehempubliclibrary.org)

# Adults

## Crash Course: Hoopla

Friday May 6 • 10am

Learn about Hoopla, a digital media service that allows you to borrow movies, music, audiobooks, ebooks, comics and TV shows with your library card.

## Coffee & Conversation: Leadership Lessons from Plutarch

Friday May 6 • 1pm

In the final session of a four-part series, presenter Giacomo Calabria will be discussing the Ancient Greek philosopher Plutarch's most famous writings on leadership. *Co-sponsored by Bethlehem Senior Projects, Inc.*

## Hands-on with eBooks

Monday May 9 • 11am

Monday May 16 • 11am

Bring your library card and your own device, and we will get you up and running with eBooks. We can work with most smartphones, tablets, Kindles and laptops.

## Crystal Air Plant Décor

Wednesday May 11 • 7pm

Create a fashionable air plant display using jewelry wire and a chunk of raw crystal.

## Coffee & Conversation: Potato-Stamped Greeting Cards

Friday May 13 • 1pm

Make summery potato stamps and use them to create some fun greeting cards.

*Co-sponsored by Bethlehem Senior Projects, Inc.*

## Alcohol Ink Coasters

Saturday May 14 • 2:30pm

Use alcohol ink and ceramic tiles to create your own coaster set. Dress for a mess.

**Teens ages 12 and up welcome!**

## Mantras and Intention Bracelets

Monday May 16 • 6:30pm

Join us to learn about Mantras and Intentions as tools for enhancing a meditation practice. Personalize this learning experience by creating your own intention bracelet.

## Baklava Baking

Wednesday May 18 • 6:30pm

In this virtual class with Robert Khalife, you will learn how to make Baklava. Cook along or watch as a demonstration. Recipe provided in advance. **Teens ages 16 and up welcome!**

## Crash Course: Reference Solutions

Friday May 20 • 10am

Join us for an overview of Reference Solutions (formerly ReferenceUSA), a database offering access to comprehensive business and consumer listings.

## Coffee & Conversation: Remember the Ladies

Friday May 20 • 1pm

Listen to stories of Revolutionary heroines presented in 18th century dress, then craft miniature paper-backed portraits of your favorite trio. *Co-sponsored by Bethlehem Senior Projects, Inc.*

## Sewing Bee: Helping School Girls Around the World

Wednesday May 25 • 1pm

Join our sewing bee and help assemble reusable menstrual hygiene pads and carry bags to be distributed to girls who need them in 30 different countries around the world.

## Virtual Trivia Night

Thursday May 26 • 7pm

Enjoy a general trivia night over Zoom as you compete for bragging rights.

## Crash Course: Find Your Next Read with NoveList

Friday June 3 • 10am

Wondering what to read next? Find out how to use the library's NoveList database to discover new books and authors.

*continued*

## Listening Parties

Thursdays at 7pm

**May 19**

Robert Moog

Listen to examples of how Robert Moog's innovative synthesizer impacted classical, jazz and popular music.

**June 16**

Be the DJ

This is your chance to choose what to listen to tonight. Send an email to michael@bethpl.org with up to four selections in any genre.

**Listen to great music, discuss and share your opinions.**

## Book Discussions

**DayBooks**

**Mondays at 1:30pm**

**May 2**

*The Book of Lost Names*  
by Kristin Harmel

**June 6**

*The House in the Cerulean Sea*  
by T.J. Klune

**Own Voices Book Group**

**Wednesdays at 7pm**

**May 25**

*The Sum of Us* by Heather McGhee

**New members welcome. Continue the discussion on Goodreads. Audio, large print and downloadable copies may be available.**

 sign up: [bethlehem.librarycalendar.com](https://bethlehem.librarycalendar.com) |  program is virtual

518-439-9314 • [www.bethlehempubliclibrary.org](https://www.bethlehempubliclibrary.org)

May/June 2022



## Hiking for All with Alan Via June 22



## Study hall @ the library June 2022

Group-study space  
for Regents exams

Schedule available  
in the library and online at  
[www.bethlehempubliclibrary.org](http://www.bethlehempubliclibrary.org).

## Adults (continued)

### Coffee & Conversation: Down the Nile **S**

Friday June 3 • 1pm

Hear about the discovery of King Tut's tomb and see examples of the treasures found. A fun Egyptian craft will follow. *Co-sponsored by Bethlehem Senior Projects, Inc.*

### Digitization Petting Zoo **S**

Wednesday June 8 • 11am

Do you have important audio or video recordings that you need to save? Join us for a hands-on tour of all the library's digital conversion equipment.

### Lebanese Cooking **S V**

Wednesday June 8 • 6:30pm

Robert Khalife will prepare several dishes popular in his native country Lebanon. Cook along or watch as a demonstration. Recipes provided in advance.

### Coffee & Conversation: Franklin and Eleanor Roosevelt in New York

Friday June 10 • 1pm

Local author Michael Burgess will discuss the time when FDR was governor of New York and how the programs he started would pave the way for his New Deal as president. *Co-sponsored by Bethlehem Senior Projects, Inc.*

### Backyard Composting **S**

Monday June 13 • 6pm

Learn about the basics of composting and how to construct a mini composter with the Master Gardener Compost team from Cornell Cooperative Extension.

### Macramé Earrings **S**

Wednesday June 15 • 6pm

Create a pair of fun bohemian earrings, with a variety of styles to choose from. No prior macrame experience needed. *Teens welcome!*

### Casting Concrete Planters **S**

Saturday June 18 • 2pm

Join us outside on the Green for an easy introduction to crafting with concrete as we make a small planter with wooden legs. Supplies provided. *Teens welcome!*

### Craft & Color for Adults

Monday June 20 • 11am

Choose between coloring or doing an open-ended craft activity. This program is specifically designed for adults of all abilities.

### Hiking for All with Alan Via

Wednesday June 22 • 7pm

Join seasoned hike leader Alan Via for an evening of hiking demonstrations and discussion for new and experienced hikers.

### The Future of Work **S**

Monday June 27 • 6pm

Join us to learn about Low-Cost or No-Cost Education and Training Options from the NYS Department of Labor Future of Work team. *Teens welcome!*

## Kids, tweens and teens

### Take and Make: Taco Tuesday **S**

Tuesday May 3

Make a silly taco for Taco Tuesday. *For pre-K and up.*

### Super Smash Bros. Ultimate Afternoon

Friday May 6 • 3:45pm

Friday May 20 • 3:45pm

Friday June 3 • 3:45pm

Join your friends to play Super Smash Bros. Ultimate on the Nintendo Switch!  
*For grades 6 and up.*

*continued*

**S** sign up: [bethlehem.librarycalendar.com](http://bethlehem.librarycalendar.com) | **V**: program is virtual

518-439-9314 • [www.bethlehempubliclibrary.org](http://www.bethlehempubliclibrary.org)

## Kids, tweens and teens *(continued)*

### Thursdays in the Park

The library has once again teamed up with Bethlehem Town Parks and Recreation to offer a family-friendly series of events **every Thursday at 6:30pm from June 16-August 18**. Most shows will take place at Elm Avenue Park, with one scheduled for South Bethlehem Park and another taking place at Henry Hudson Park. Visit [bethlehem.librarycalendar.com](http://bethlehem.librarycalendar.com) for details about the performers. This series is co-sponsored by Friends of Bethlehem Public Library, Friends of Bethlehem Parks and Recreation Department.



#### Dungeons and Dragons

Friday May 13 • 3:45pm

Friday May 27 • 3:45pm

Friday June 10 • 3:45pm

Use your imagination and problem-solving skills while socializing with others who enjoy role-playing games. Playing materials provided. **For grades 6 and up.**

#### Color Your Own Library Tote **S**

Saturday May 14 • 11am

Decorate your own tote to use for summer reading and beyond. **For ages 4-17.**

#### Family STEAM Night: Moon Rovers **S**

Wednesday June 1 • 6:30pm

Work with your family to build a Moon Rover out of cardboard in this activity designed by educators at NASA. **For families with children in grades K and up.**

#### Bollywood Dancing for Kids **S**

Saturday June 25 • 11am

Children will observe, learn and perform Bollywood dancing with Narthanalaya School of Arts. **For grades 1-5.**

### Storytimes and more

#### Family Story Time on the Green

Mondays May 2-23 • 2pm

Stories, songs and more. **For ages 0-6 with a caregiver.**

#### Baby Bounce & Books on the Green

Tuesdays May 3-24 • 11am

Tuesday June 21 • 11am

Stories, songs and baby bounces. **For up to age 35 months with caregiver.**

#### Family Story Time

Fridays May 6-27 • 11am

Stories, songs and more in the Community Room. **For ages 0-6 with caregiver.**

#### Music and Movement on the Green

Thursdays May 5-26 • 11am

Saturday June 18 • 11am

Songs, dancing, learning and fun. **For ages 0-6 with a caregiver.**



Thursdays  
in the Park  
June-August



#### Just for Me: Teen Book Boxes

Register for a curated  
box of books and treats!

**June 6-20**

For BCSD residents  
in grades 6-12.



Music and Movement  
May and June

**S** sign up: [bethlehem.librarycalendar.com](http://bethlehem.librarycalendar.com) | **V**: program is virtual

518-439-9314 • [www.bethlehempubliclibrary.org](http://www.bethlehempubliclibrary.org)



451 Delaware Avenue · Delmar, NY 12054  
518-439-9314 · [www.bethlehempubliclibrary.org](http://www.bethlehempubliclibrary.org)

**ECRWSS**  
**Postal customer**

NON-PROFIT  
ORGANIZATION  
U.S. POSTAGE  
PAID  
Albany, NY  
Permit #79



## Long-range plan

The board of trustees recently put the finishing touches on the library's Long-Range Services Plan for 2022-2025. This plan identifies strategic goals for the coming years to promote inclusion and equity, education and sustainability.

The services plan joins the Long-Range Facilities Master Plan that addresses space needs for programming, events, collections, quiet study, storage, staff workspaces, comfort and accessibility. Visit our website at [bethlehempubliclibrary.org](http://bethlehempubliclibrary.org) to read copies of both plans.

Both plans represent months of discussion and information-gathering and provide the framework for where we'd like to devote our energy as a library in the years to come.

## Relax and read outside

This spring, you're invited to spend some time in our welcoming outdoor nook just off the Children's Place filled with fun-sized furniture and whimsical decorations. The Ian Boegel Memorial Patio is just the place to hang out and enjoy sunny days with your library friends.

Read, relax or make your mark with a colorful chalk creation! With the Memorial Patio, our young visitors are invited to enjoy the library inside and out.



## Follow us on social media:

**facebook**

[facebook.com/  
bethlehempubliclibrary](https://facebook.com/bethlehempubliclibrary)

**twitter**

[twitter.com/BethlehemPL](https://twitter.com/BethlehemPL)



**Instagram**

[@bethlehempubliclibrary](https://www.instagram.com/bethlehempubliclibrary)  
[@BPLTeens](https://www.instagram.com/BPLTeens)

**tumblr**

[bplteens451.tumblr.com](https://bplteens451.tumblr.com)